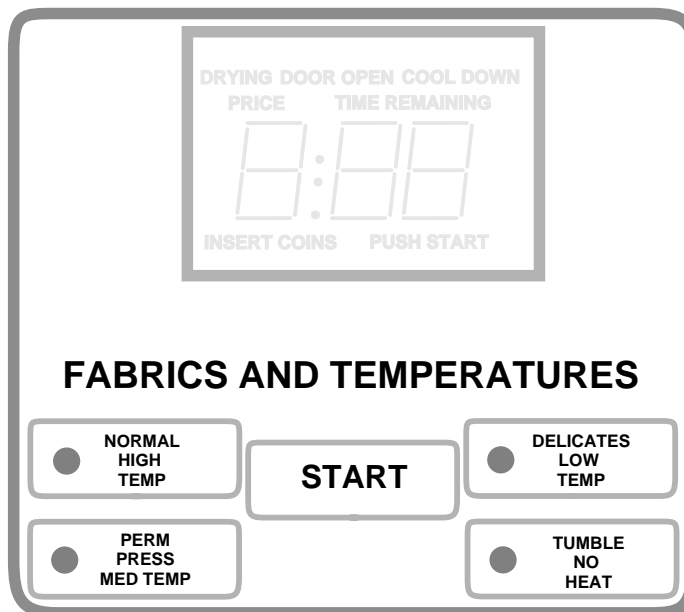


# Electronic Control

## Tumbler Troubleshooting Guide

JTD30XG-EC, JTB30XG-EC, STB30XG-3C,  
JTD32DG-EC, STD32DG-EC



C541i





## WARNING

- Failure to install, maintain, and/or operate this product according to the manufacturer's instructions may result in conditions which can produce serious injury, death and/or property damage.
- Do not repair or replace any part of the product or attempt any servicing unless specifically recommended or published in this Service Manual and that you understand and have the skills to carry out.
- Whenever ground wires are removed during servicing, these ground wires must be reconnected to ensure that the product is properly grounded and to reduce the risk of fire, electric shock, serious injury, or death.

W006R1



## WARNING

Repairs that are made to your products by unqualified persons can result in hazards due to improper assembly or adjustments subjecting you, or the inexperienced person making such repairs, to the risk of serious injury, electrical shock, or death.

W007



## CAUTION

If you or an unqualified person perform service on your product, you must assume the responsibility for any personal injury or property damage which may result. The manufacturer will not be responsible for any injury or property damage arising from improper service and/or service procedures.

W008

**NOTE: The WARNINGS and IMPORTANT INSTRUCTIONS appearing in this manual are not meant to cover all possible conditions and situations that may occur. It must be understood that common sense, caution and carefulness are factors which CANNOT be built into these products. These factors MUST BE supplied by the person(s) installing, maintaining or operating the product.**

Always contact your dealer, distributor, service agent or the manufacturer about any problems or conditions you do not understand.

### Recognize Safety Symbols, Words and Labels

**▲ DANGER**—Immediate hazards which **WILL** result in serious injury or death

**▲ WARNING**—Hazards or unsafe practices which **COULD** result in serious injury or death.

**▲ CAUTION**—Hazards or unsafe practices which **COULD** result in minor or moderate injury or product or property damage.

W009

© Copyright 1999, Alliance Laundry Systems LLC

All rights reserved. No part of the contents of this book may be reproduced or transmitted in any form or by any means without the expressed written consent of the publisher.

# NOTES

# TABLE OF CONTENTS

## SECTION 1

Electronic Control Error Code Listing .....	5
---	---

## SECTION 2 – TROUBLESHOOTING

Cannot Perform Infrared (IR) Communication .....	7
--	---

Coins Ignored When Entered .....	8
----------------------------------	---

Electronic Control Has No Visible Display .....	9
---	---

### Stack Tumbler

No Motor Run – "Door Open" Analysis .....	10
---	----

No Motor Run – "Push Start" Analysis .....	12
--	----

No Heat Analysis .....	14
------------------------	----

Safety Circuit Analysis .....	16
-------------------------------	----

### Tumbler

No Motor Run – "Door Open" Analysis .....	18
---	----

No Motor Run – "Push Start" Analysis .....	20
--	----

No Heat Analysis .....	22
------------------------	----

Safety Circuit Analysis .....	24
-------------------------------	----

**NOTE: All voltage checks in this Troubleshooting Guide are 120 Volts. There should be little variation from this voltage range.**

# NOTES

# SECTION 1

## Electronic Control Error Code Listing

Listed below are some of the error codes that may appear on the Electronic Control.

"E:00"	General Error	
"E:01"	Proximity Error	Micro-wand IIIe is improperly aimed at Infrared communicator (angle or distance): Re-aim Micro-wand IIIe.
"E:02"	IR Communication Disconnection	Micro-wand IIIe prematurely pulled away from Electronic Control during infrared communication: Maintain infrared connection between Micro-wand IIIe and Electronic Control during communication.
"E:05"	Invalid Value Communication	Invalid code downloaded from Micro-wand IIIe to Electronic Control:
"E:07"	Inoperative Control	Replace Electronic Control.
"E:08"	Inoperative Control	Replace Electronic Control.
"E:09"	Proximity Error	Micro-wand IIIe is improperly aimed at Infrared communicator (angle or distance): Re-aim Micro-wand IIIe.
"E:0A"	Proximity Error	Micro-wand IIIe is improperly aimed at Infrared communicator (angle or distance): Re-aim Micro-wand IIIe.
"E:0B"	IR Communication Disconnection	Micro-wand IIIe prematurely pulled away from Electronic Control during infrared communication: Maintain infrared connection between Micro-wand IIIe and Electronic Control during communication.
"E:0C"	IR Communication Disconnection	Micro-wand IIIe prematurely pulled away from Electronic Control during infrared communication: Maintain infrared connection between Micro-wand IIIe and Electronic Control during communication.
"E:0F"	IR Communicator Programmed Off	Reprogram infrared communicator on.
"Err"	Coin Error	1) Inoperative coin sensor: Run the Coin Drop Diagnostic test. 2) Coin drop obstruction: Check coin drop area and remove any obstructions. 3) Customer tampering: Evaluate security procedures.
"OP"	Open Thermistor	Physical opening in the thermistor circuit: Change thermistor.
"SH"	Shorted Thermistor	Dead short in the thermistor circuit: Change thermistor.

**NOTE: Disconnecting power to the unit may clear the error display.**

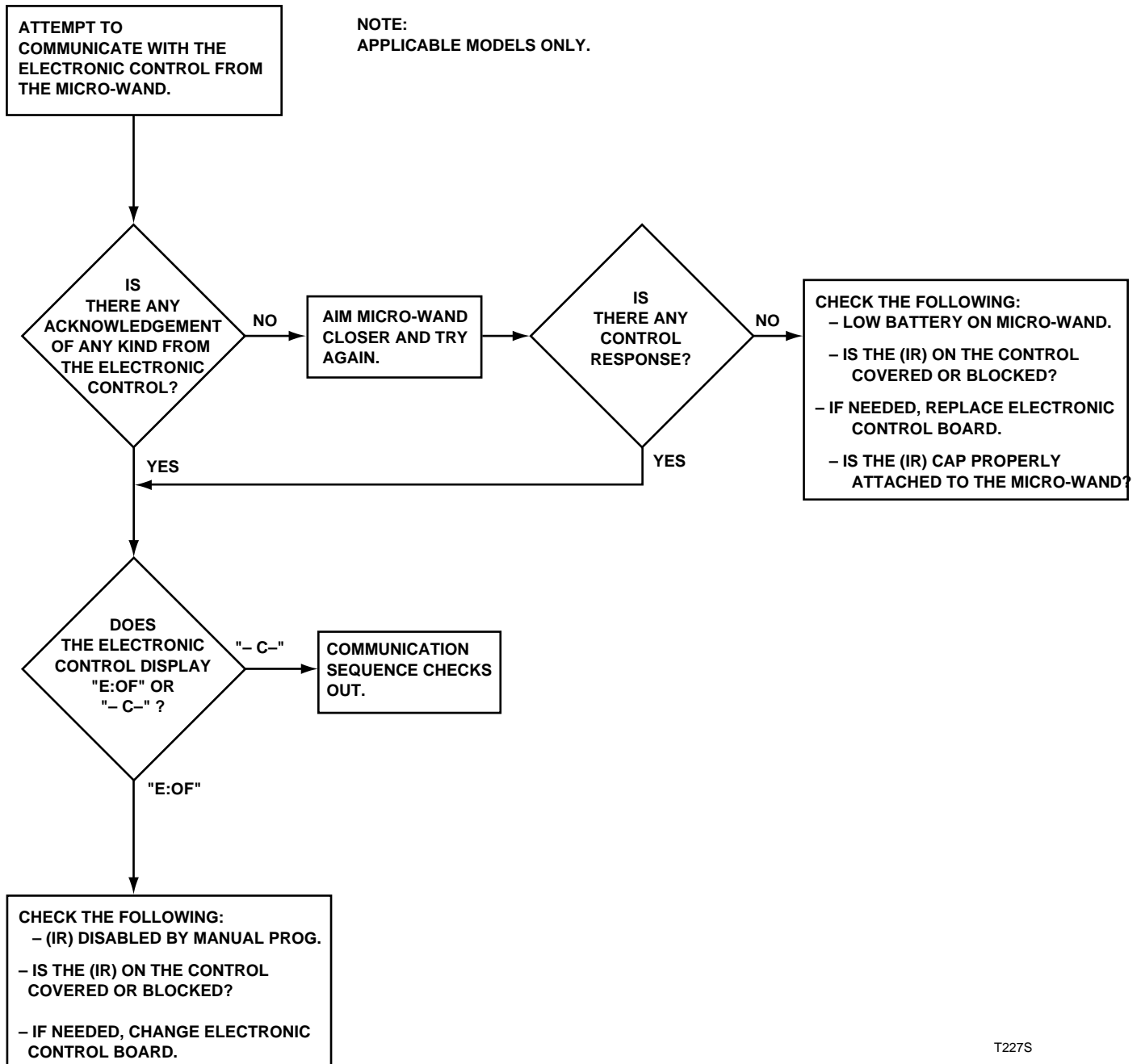
# NOTES



# SECTION 2

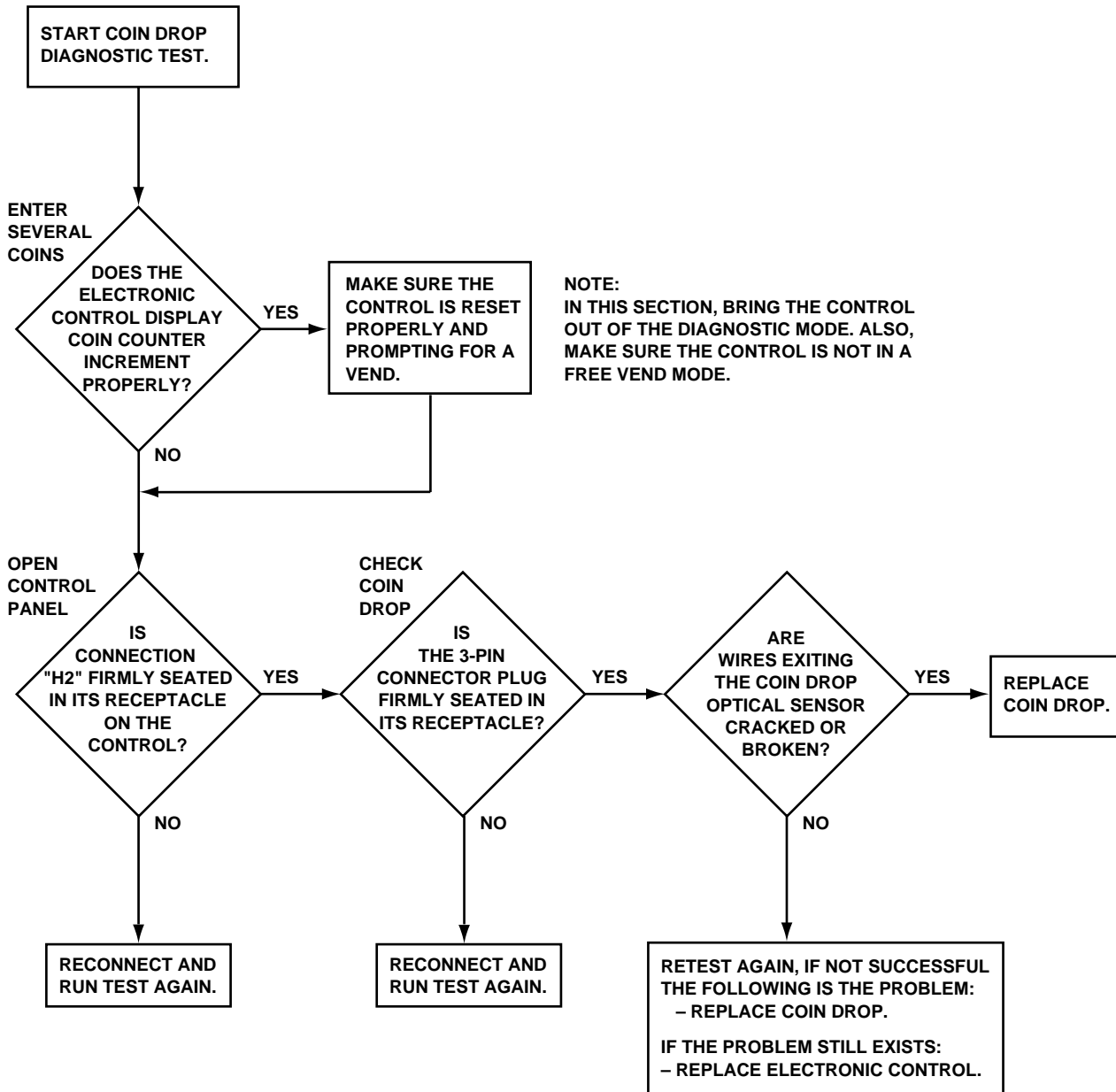
## Troubleshooting

### CANNOT PERFORM INFRARED COMMUNICATION



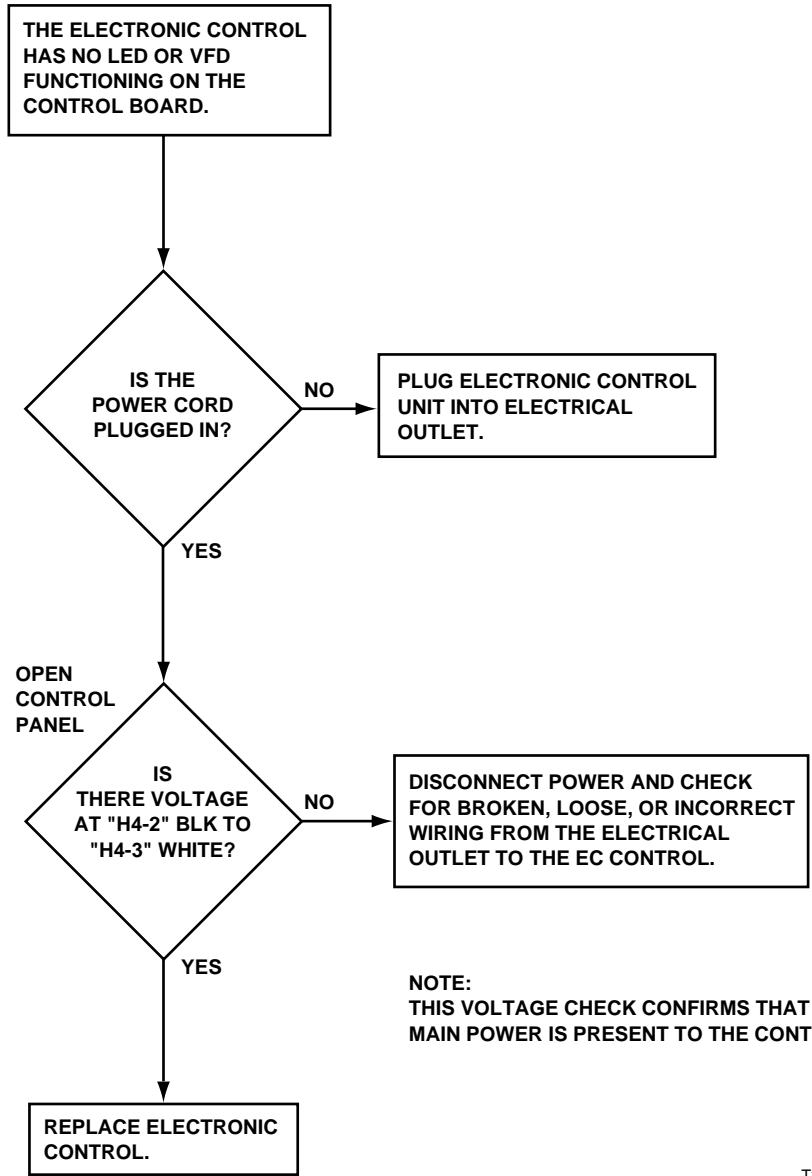
T227S

COINS IGNORED WHEN ENTERED



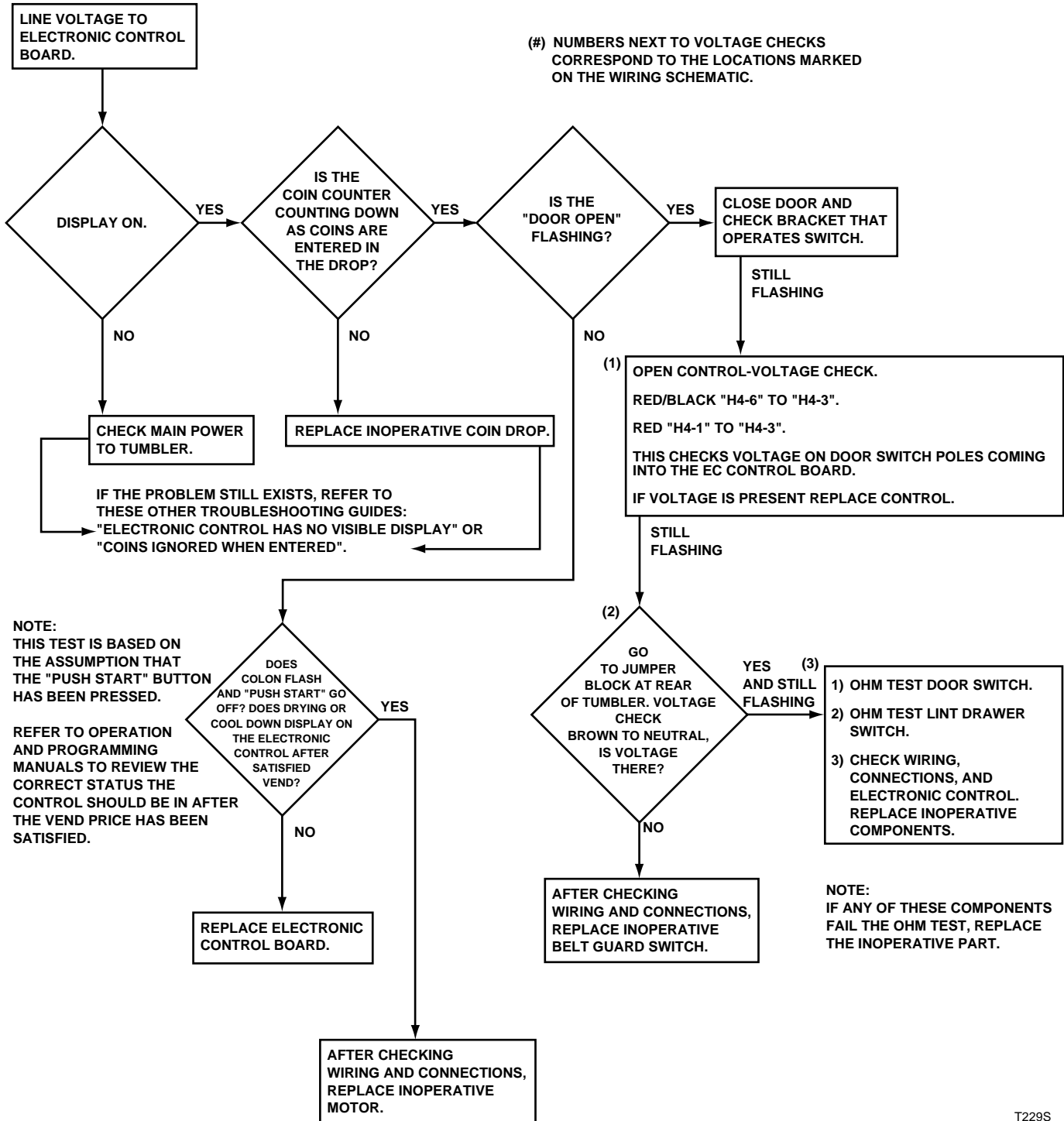
T226S

**ELECTRONIC CONTROL HAS NO VISIBLE DISPLAY**

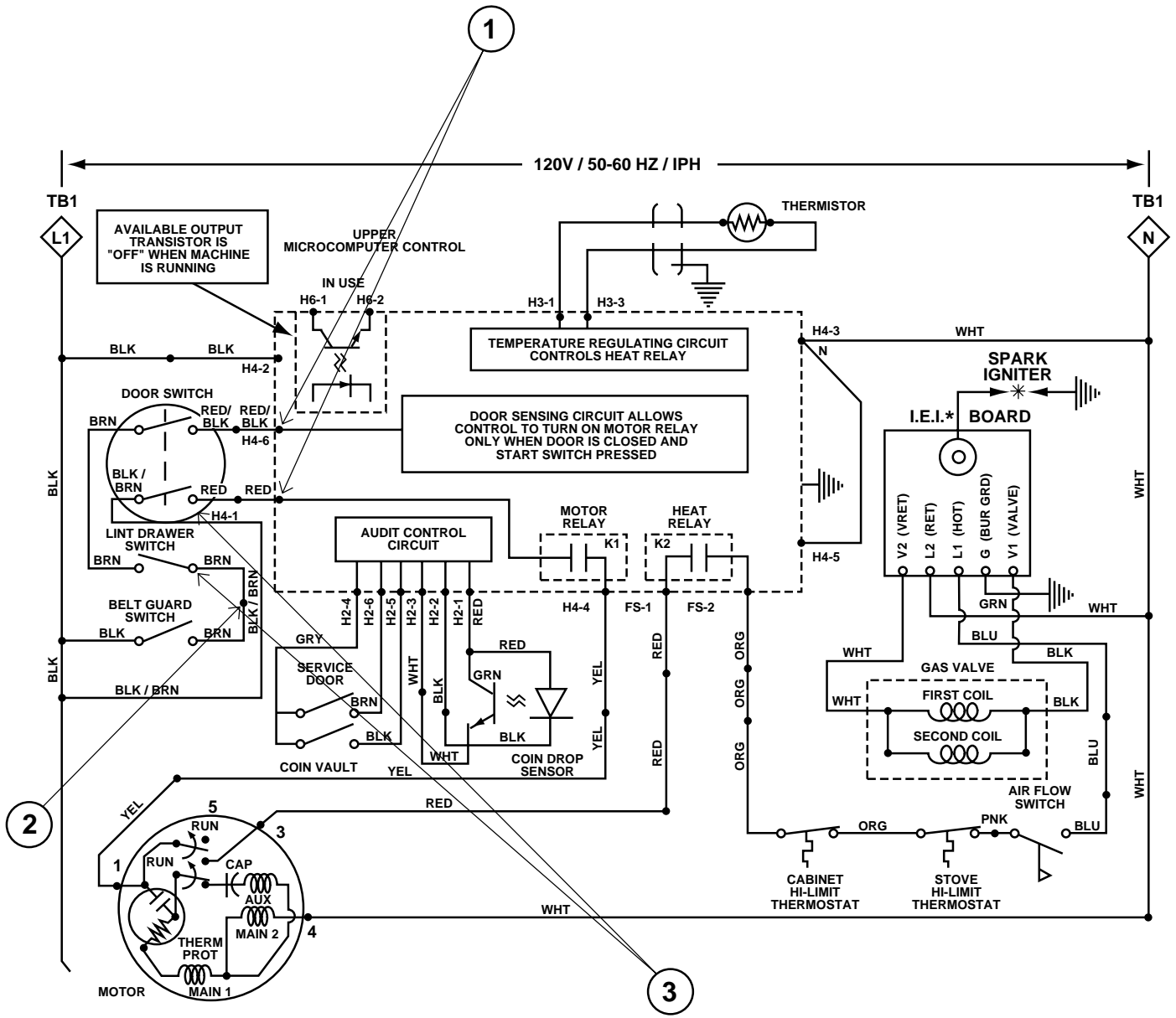


T228S

NO MOTOR RUN -- "DOOR OPEN" ANALYSIS



T229S



\* I.E.I. = INSTANT ELECTRONIC IGNITION

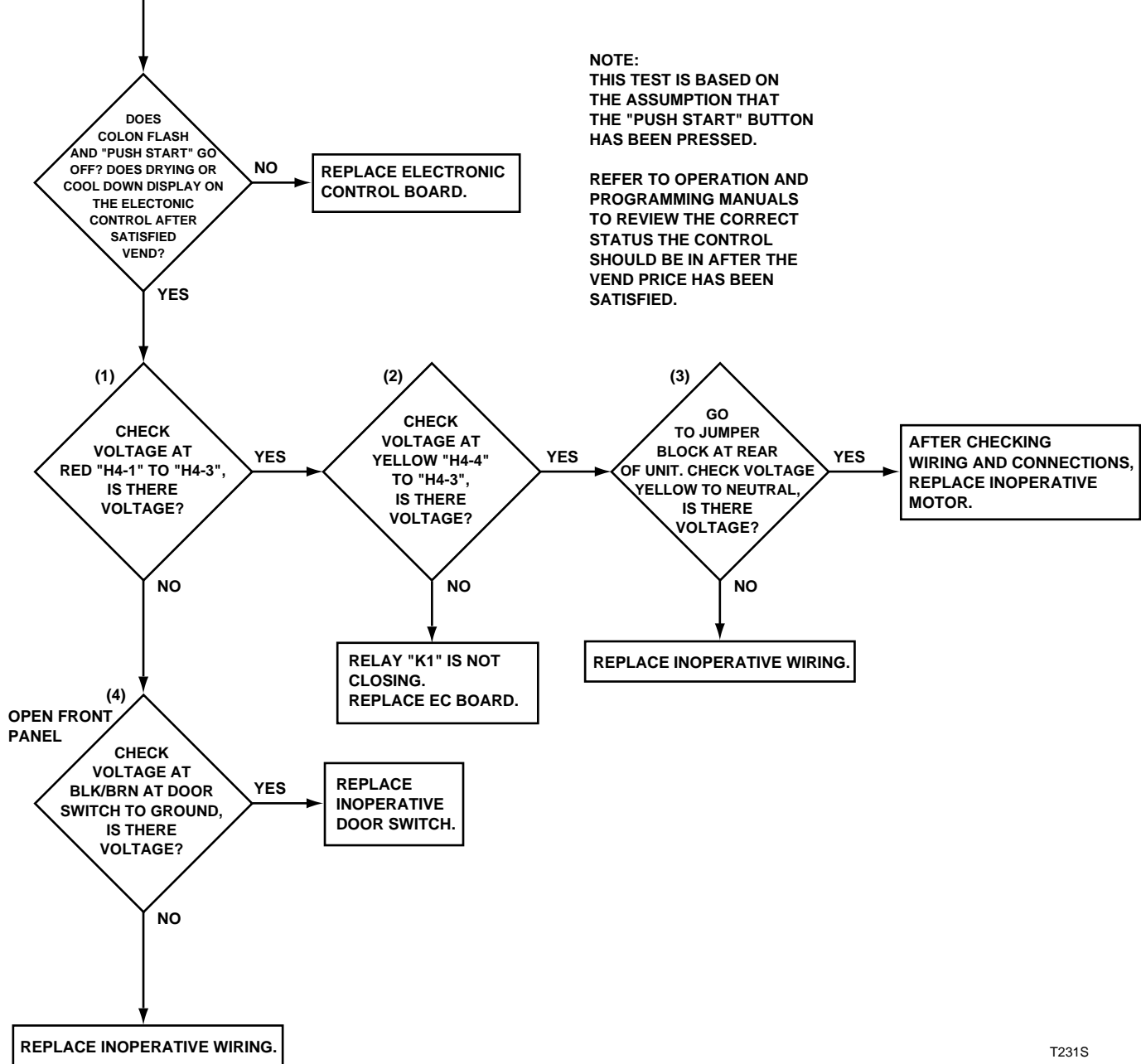
T230S

NO MOTOR RUN -- "PUSH START" ANALYSIS

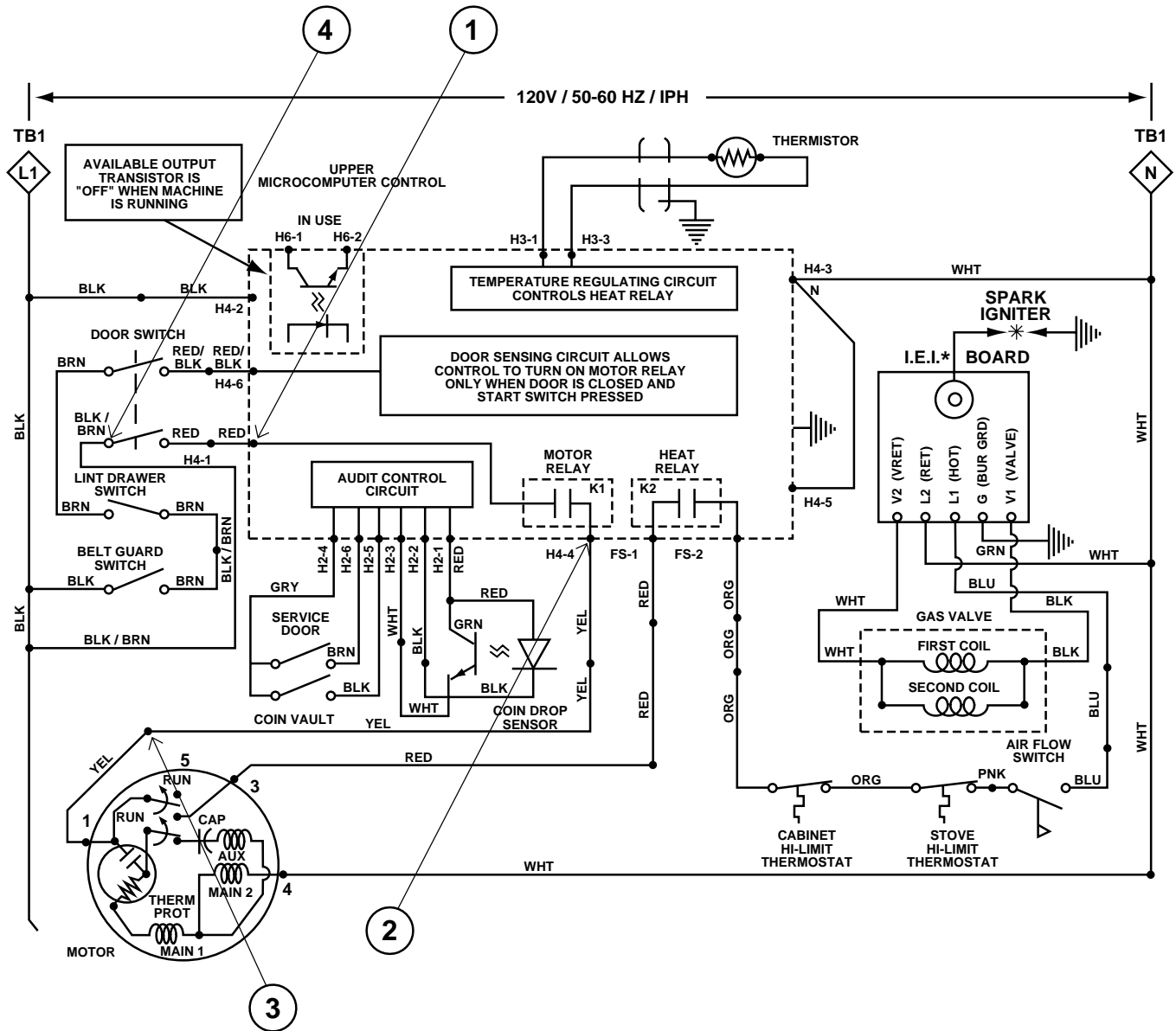
"PUSH START" IS FLASHING AND "PUSH START" BUTTON HAS BEEN PRESSED.  
THERE IS NO MOTOR RUN.  
GO THROUGH THE FOLLOWING CHECKS:

(#) NUMBERS NEXT TO VOLTAGE CHECKS CORRESPOND TO THE LOCATIONS MARKED ON THE WIRING SCHEMATIC.

NOTE:  
THIS TEST IS BASED ON THE ASSUMPTION THAT THE "PUSH START" BUTTON HAS BEEN PRESSED.  
REFER TO OPERATION AND PROGRAMMING MANUALS TO REVIEW THE CORRECT STATUS THE CONTROL SHOULD BE IN AFTER THE VEND PRICE HAS BEEN SATISFIED.



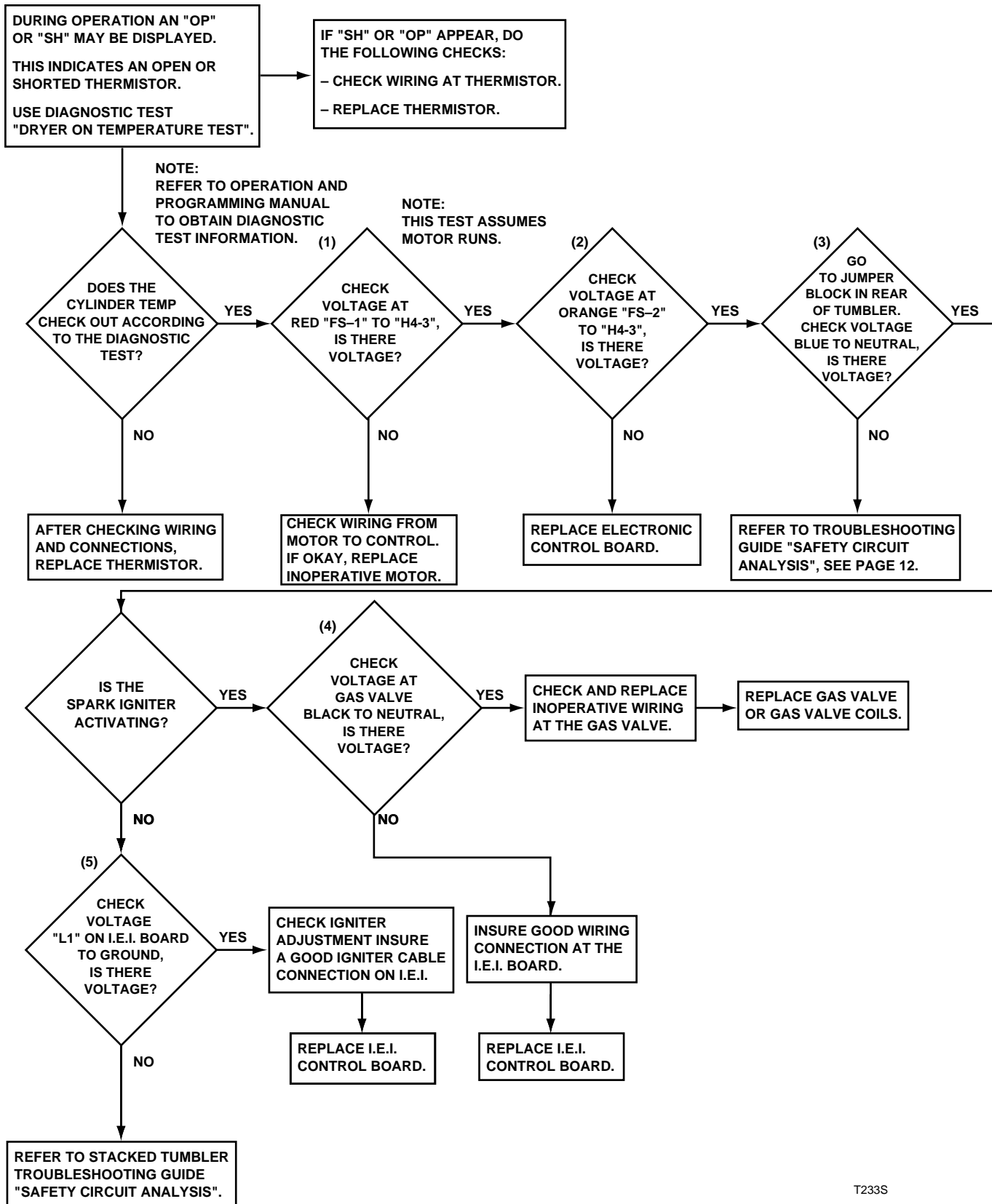
T231S



\* I.E.I. = INSTANT ELECTRONIC IGNITION

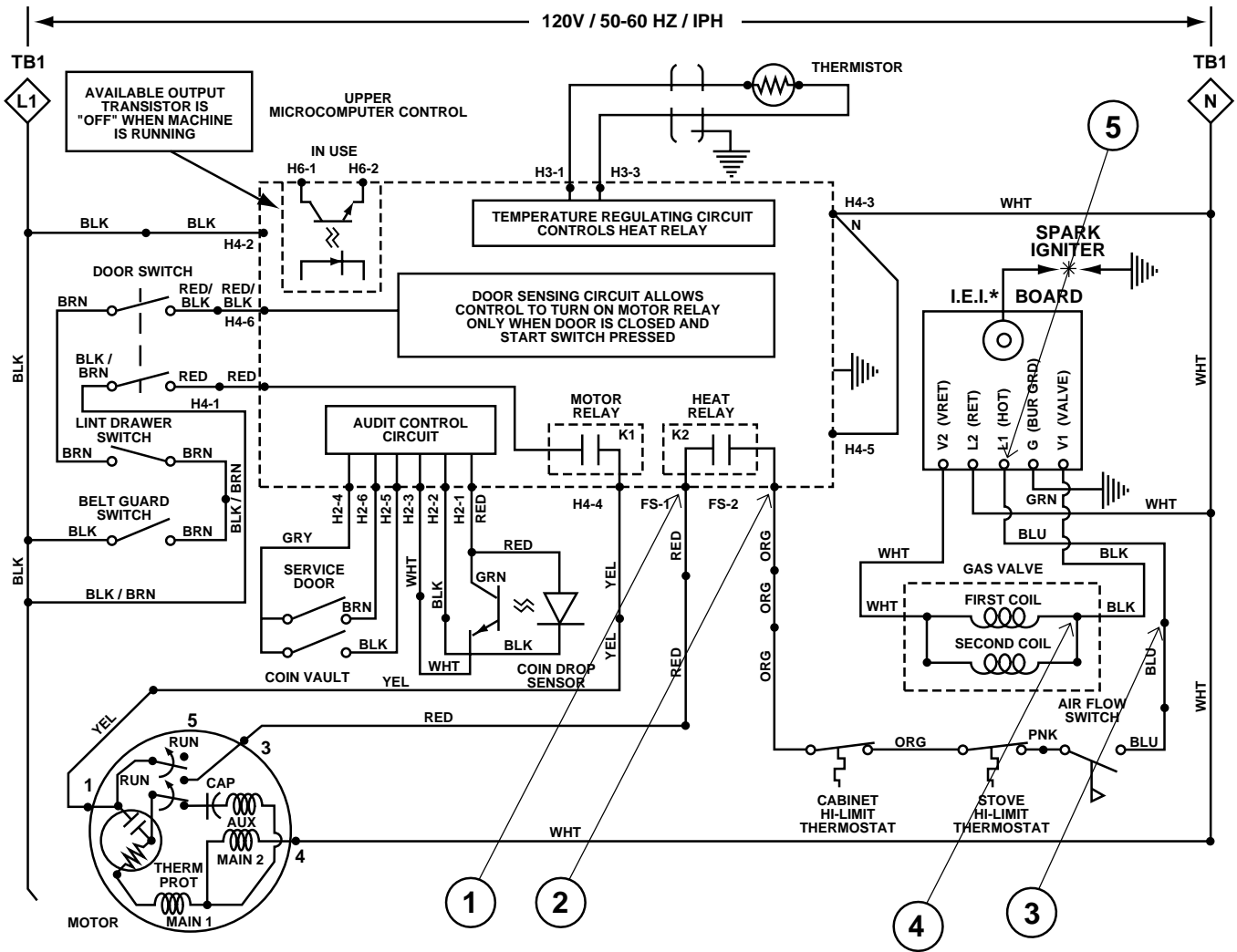
T232S

NO HEAT ANALYSIS



T233S

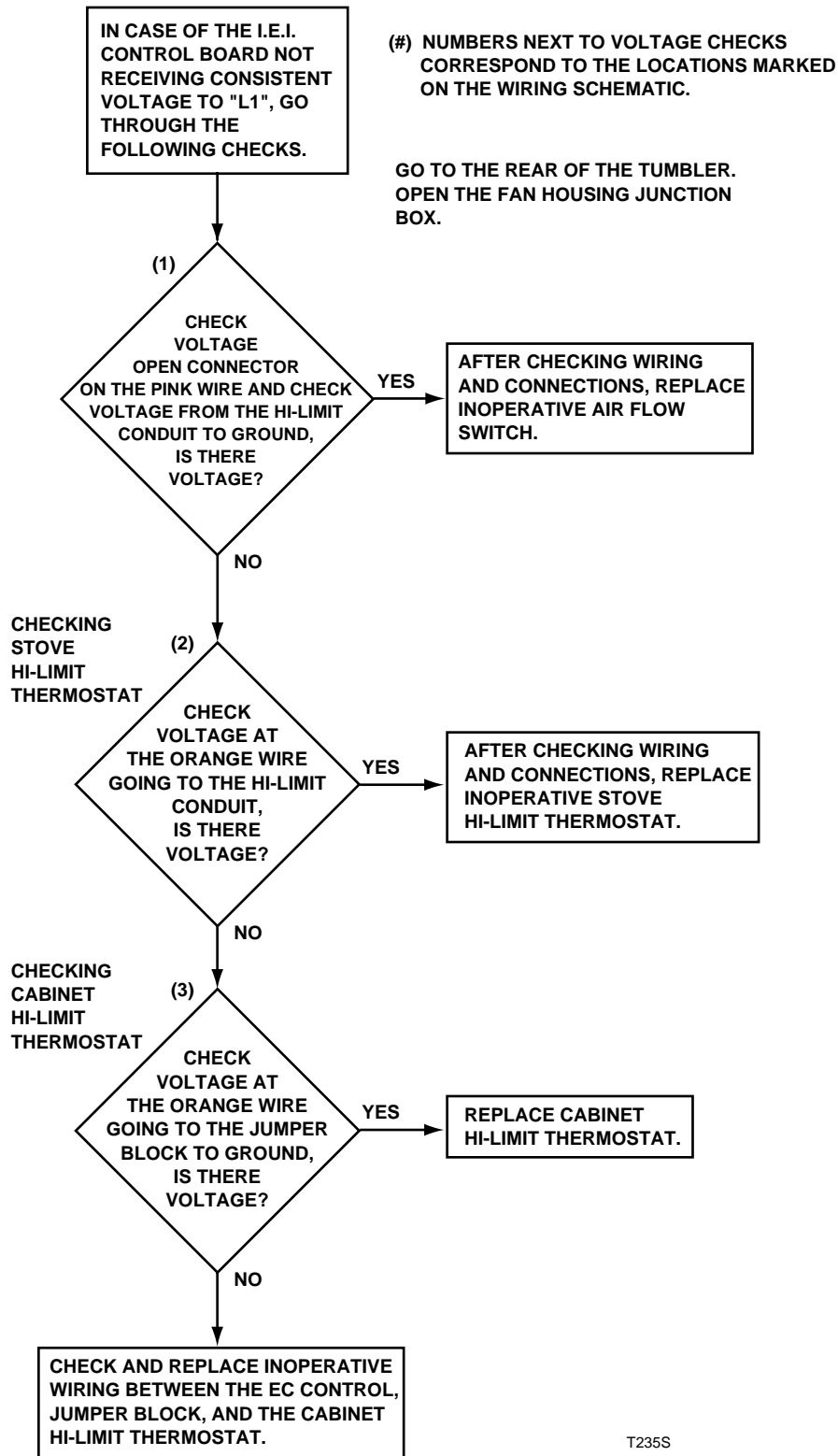




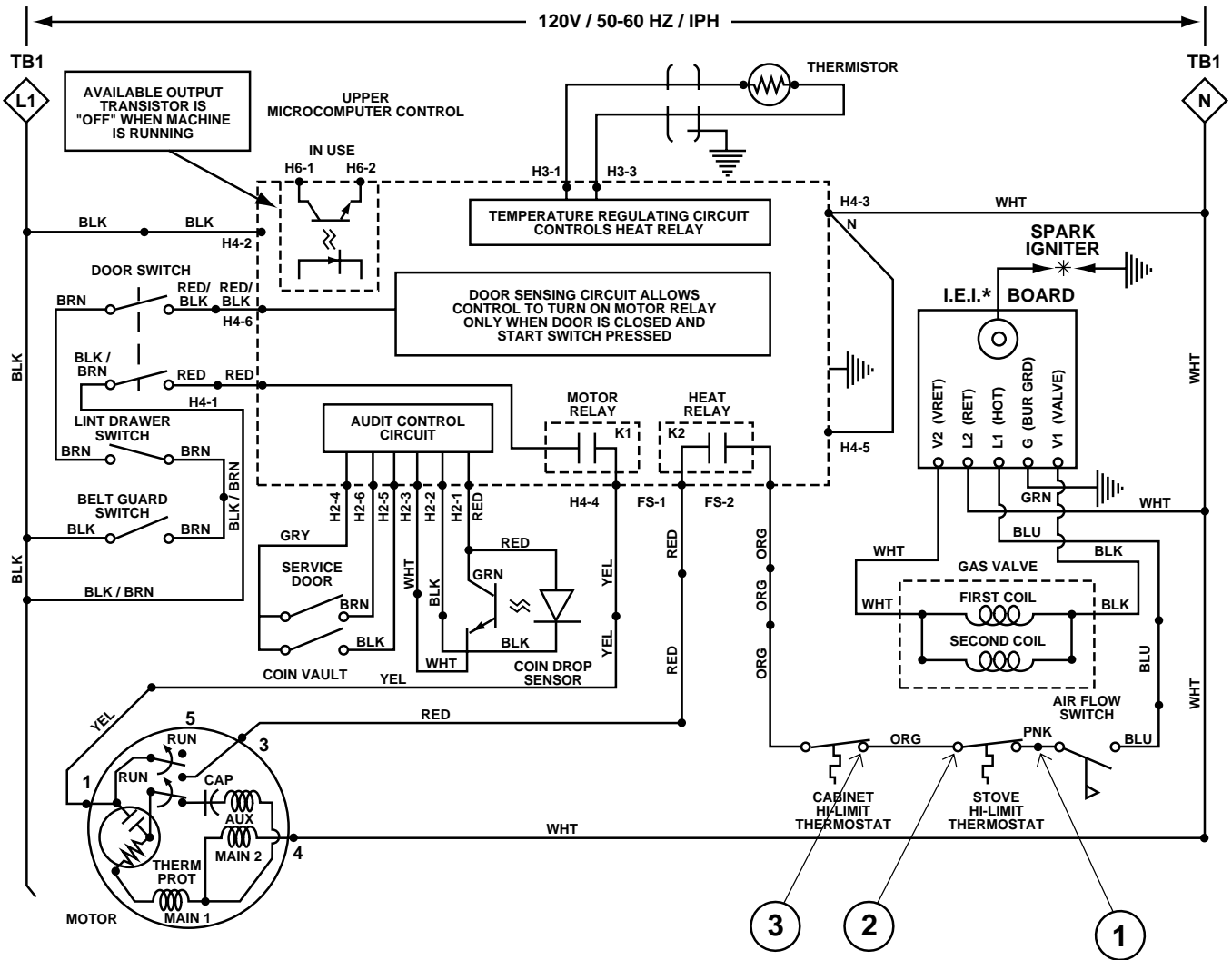
\* I.E.I. = INSTANT ELECTRONIC IGNITION

T234S

SAFETY CIRCUIT ANALYSIS



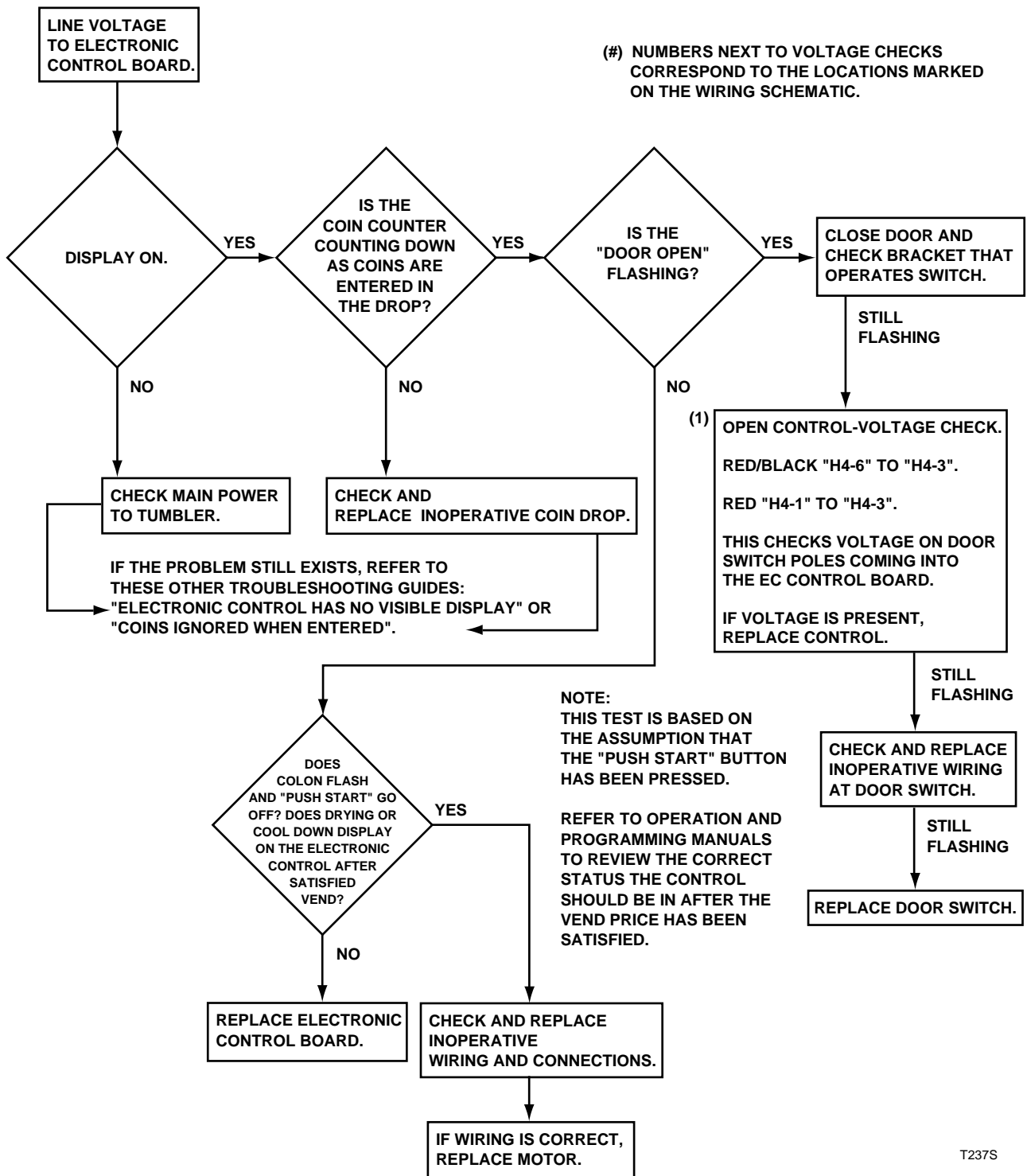
T235S



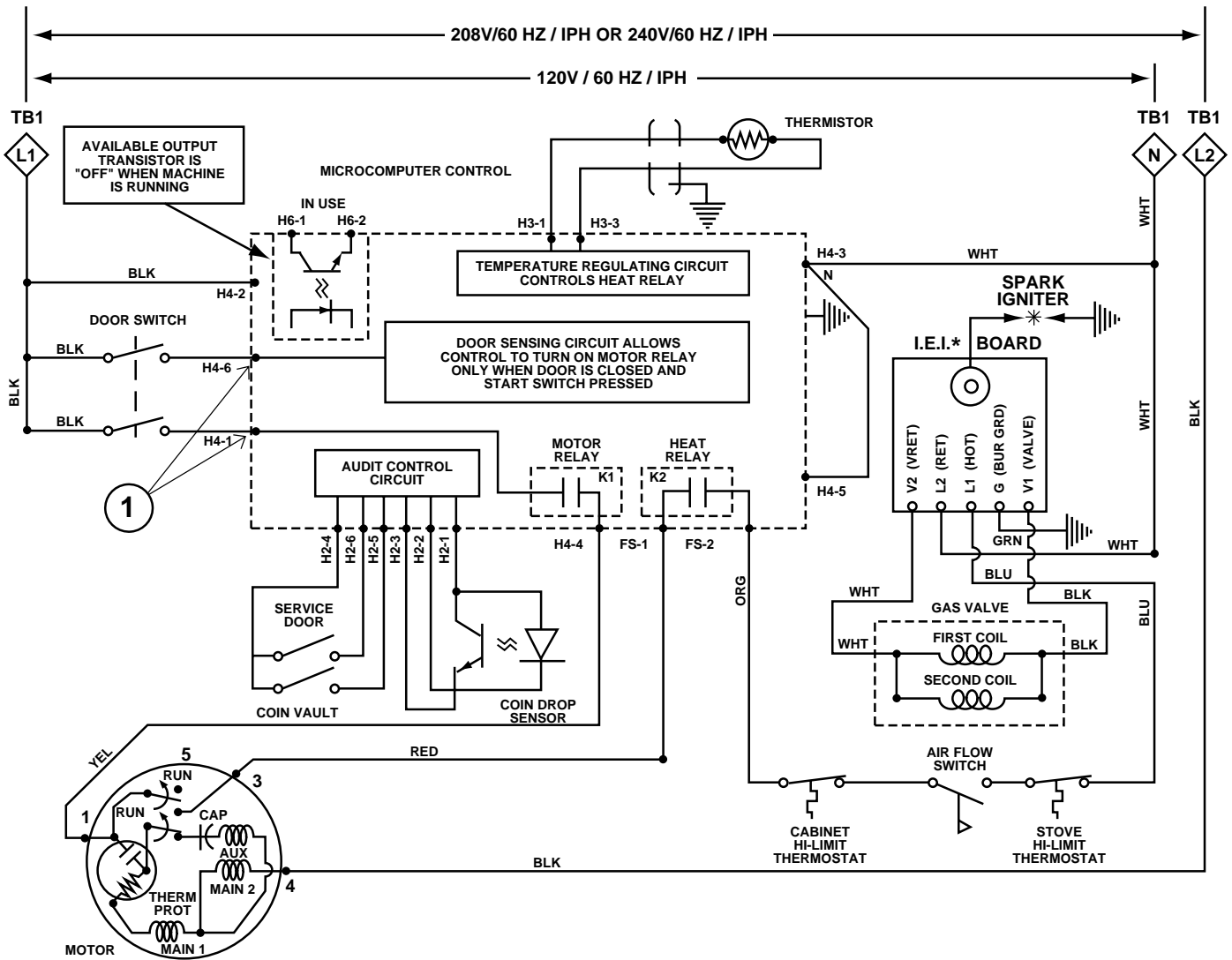
\* I.E.I. = INSTANT ELECTRONIC IGNITION

T236S

NO MOTOR RUN -- "DOOR OPEN" ANALYSIS



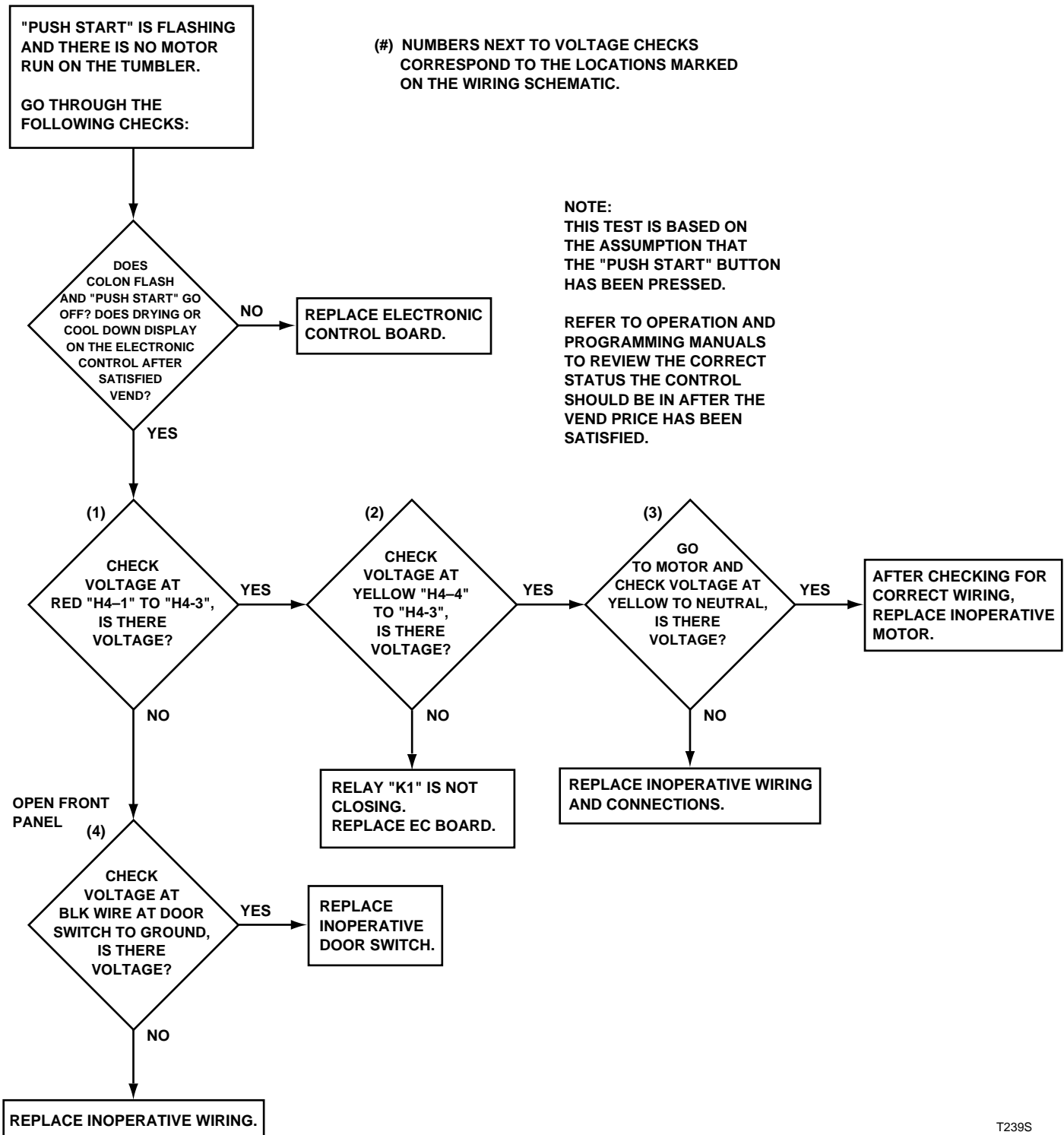
T237S



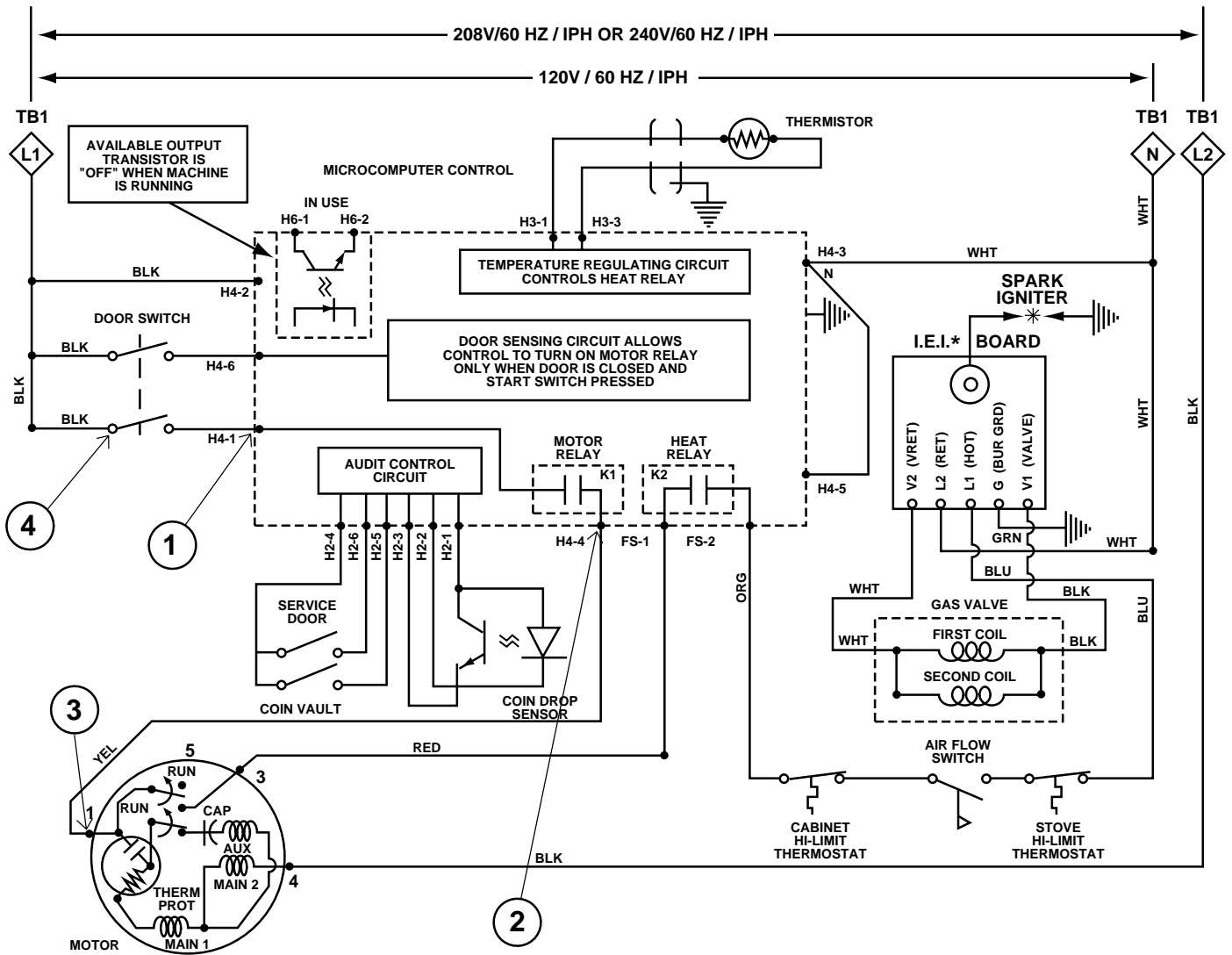
\* I.E.I. = INSTANT ELECTRONIC IGNITION

T238S

NO MOTOR RUN -- "PUSH START" ANALYSIS

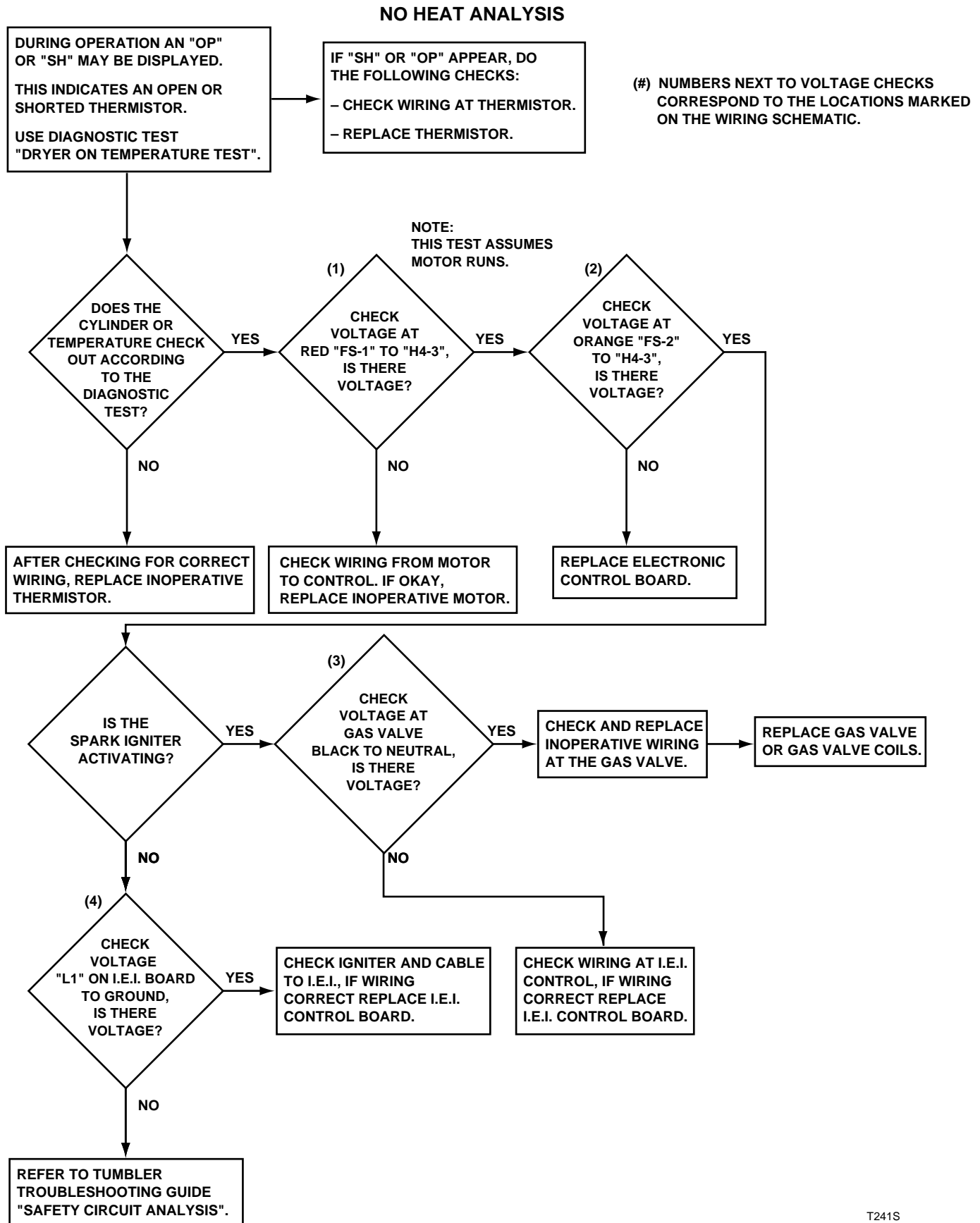


T239S

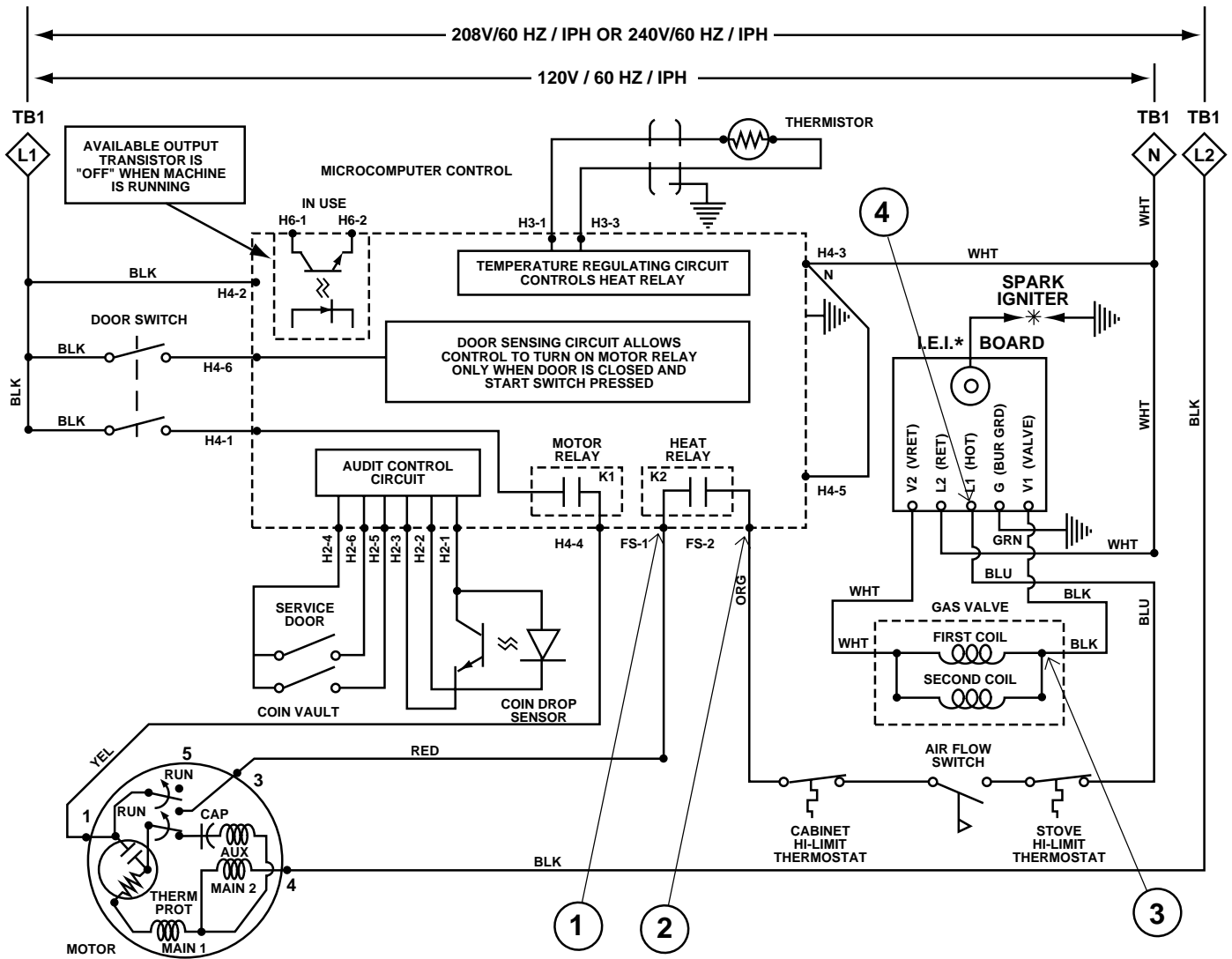


\* I.E.I. = INSTANT ELECTRONIC IGNITION

T240S







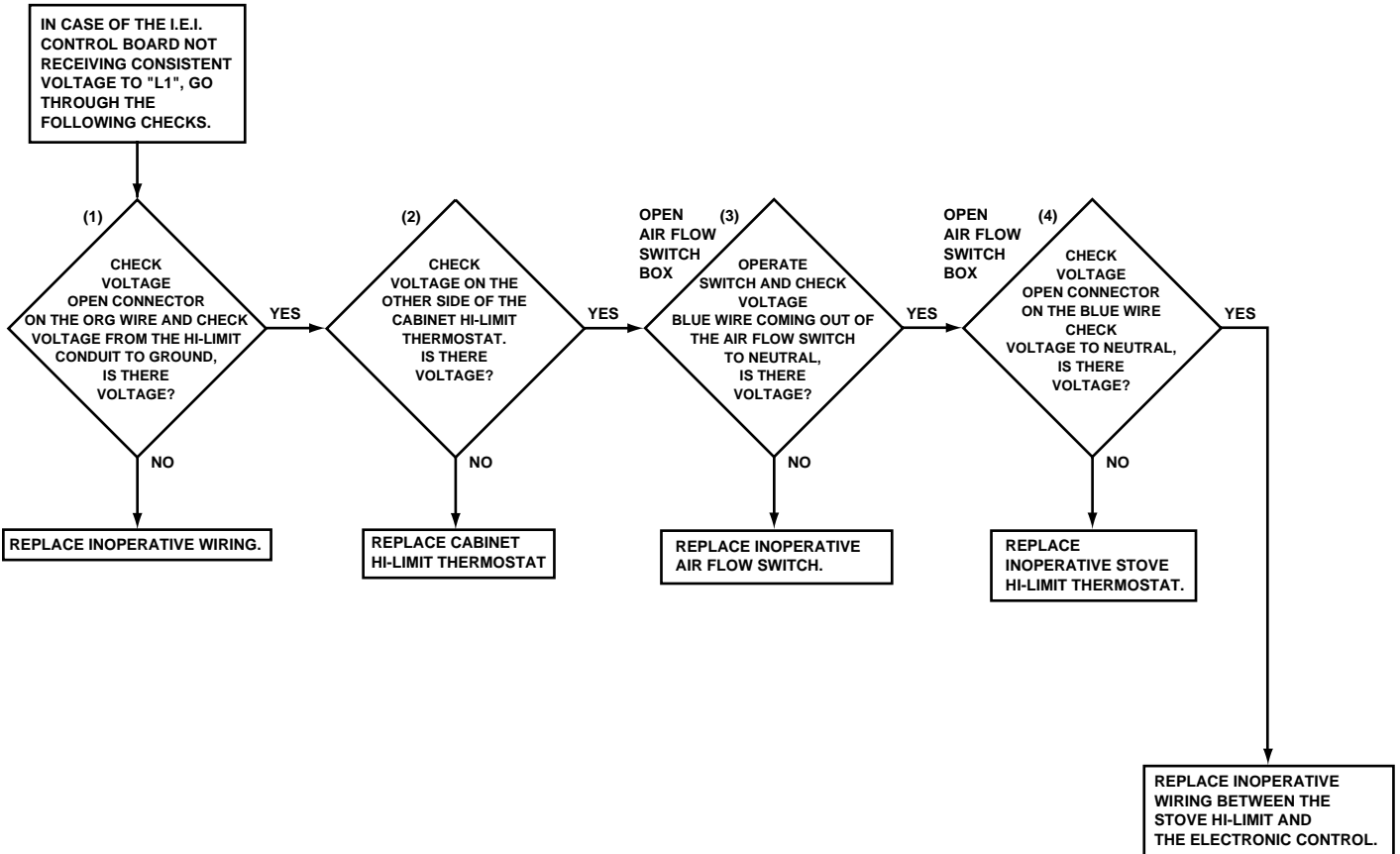
\* I.E.I. = INSTANT ELECTRONIC IGNITION

T242S

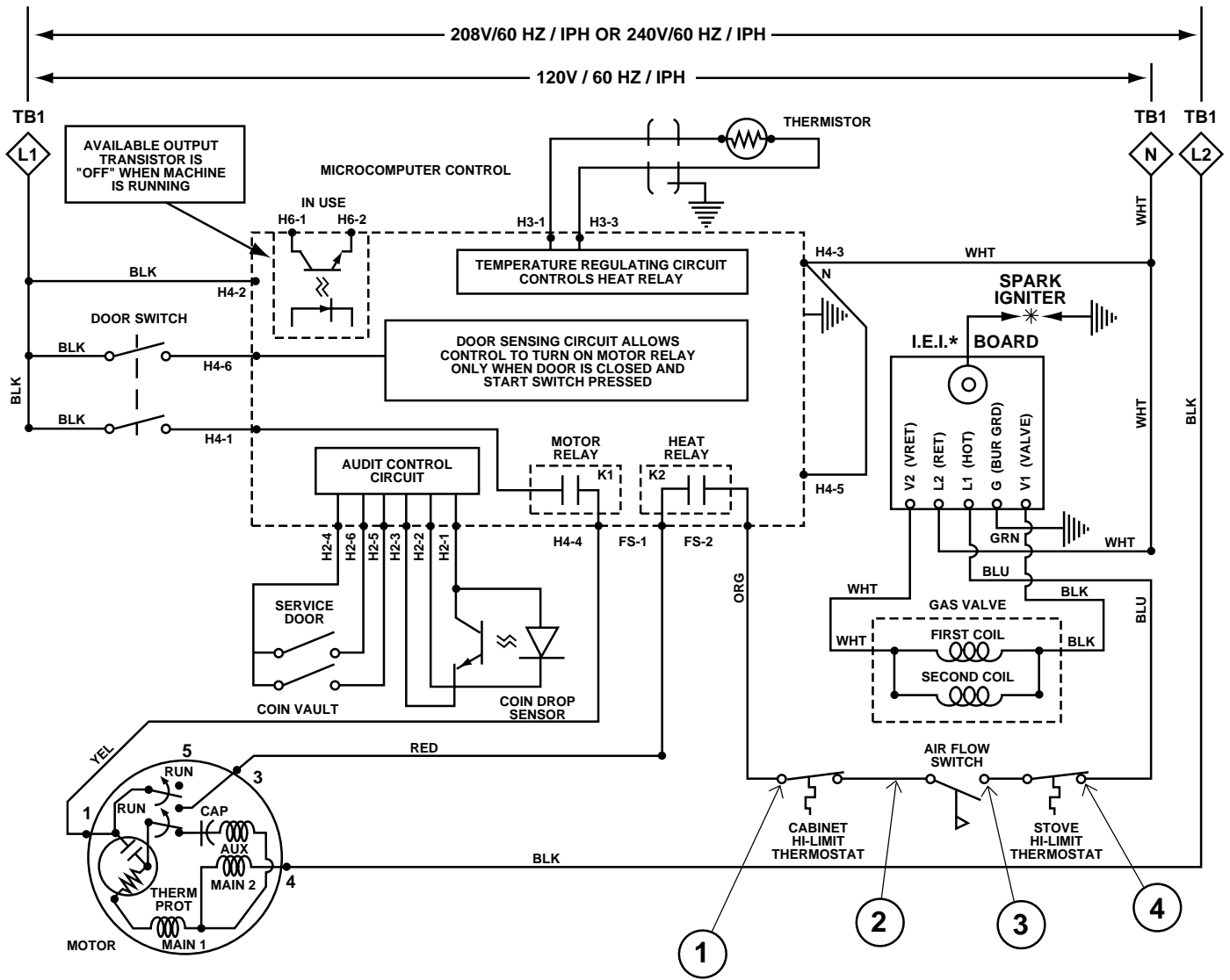
SAFETY CIRCUIT ANALYSIS

(#) NUMBERS NEXT TO VOLTAGE CHECKS CORRESPOND TO THE LOCATIONS MARKED ON THE WIRING SCHEMATIC.

GO TO THE REAR OF THE TUMBLER.  
OPEN THE JUNCTION BOX.



T243S



\* I.E.I. = INSTANT ELECTRONIC IGNITION

T244S